



VESTA

Domestic smoke alarm detector

- **Certificazione AFNOR**
- **Ideato per uso domestico**

VESTA è un rivelatore di fumo stand – alone ideato per proteggere abitazioni private, appartamenti , caravan).

Quando il fumo viene rilevato, emette un suono di allarme attraverso il buzzer di cui è dotato..

VESTA è un rivelatore ottico di fumo che utilizza l'effetto Tyndall per verificare la presenza di particelle di combustione nell'aria che analizza .In particolare rivela fumi freddi e visibili (con particelle di combustione I dimensioni comprese tra 0,3µm e 2µm).

E' dotato di una batteria ed emette un suono modulato , compatibile con il segnale di evacuazione specificato secondo le **ISO8201 standard) quando rileva il fumo.**

DAAF-REL è una scheda opzionale dotata di un relè che consente di ripetere l'informazione di allarme e di interfacciarsi ad un altro dispositivo di rivelazione incendio ..

DAAF-INTER è una scheda opzionale che permette di collegare tra di loro più Vesta .



Caratteristiche principali

- Rivelazione fumo
- Principio fotoelettrico (effetto Tyndall)
- Suono modulato
- Led di Standby
- Scheda relè per ripetizione di allarme
- Scheda opzionale per networking.

Power supply specification	
Main supply voltage	6,5Vdc to 9Vdc
Nominal main supply voltage	9Vdc
Quiescent current (9Vdc)	4µA to 5,5µA + 6,5µA average (500mA/105µs each 8s)
Alarm current (9Vdc)	11mA ± 2mA
Fault current (9Vdc)	Same as quiescent current
Mechanical characteristics	
Unit weight	185g
Unit dimensions (in mm)	H:54 D:120
Unit row material	ABS
Unit colour	Off white
Protection class	IP32
Mounting	2 screws Ø 3,5mm
Climatic characteristics	
Operating temperature	0°C to +55°C
Storage temperature	+10°C to +50°C
Operating relative humidity	≤ 93%
Storage relative humidity	≤ 85%
Acoustic characteristics	
Sound power in alarm	> 93dB @ 1m
Sound power in fault	> 70dB @ 1m



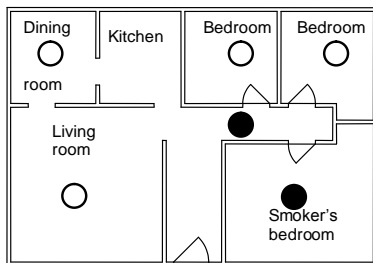
VESTA

Domestic smoke alarm detector

INSTALLAZIONE

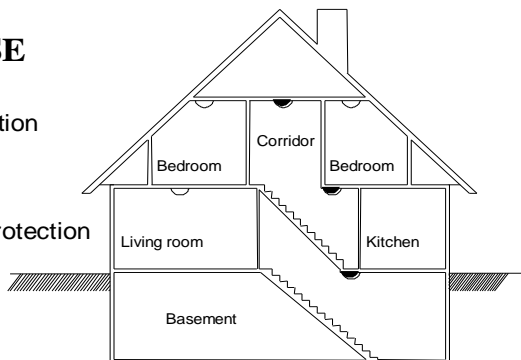
Appartamento

- Protezione di g
- Enhanced protection



HOUSE

- Basic protection
- Enhanced protection



Do not install the detector:

- Less than 1m away from heating, cooling or ventilation ducts. Any smoke may be drawn away or diluted.
- In a spot where the temperature may fall below 0°C or rise above +50°C, as there would be a risk of the detector operating poorly as a result.
- In a location where there is a risk of condensation forming. Bathrooms and laundry rooms should be avoided.
- In places such as poorly-ventilated kitchens or garages, where smoke may be released and cause false alarms.
- In spots that are too dusty.

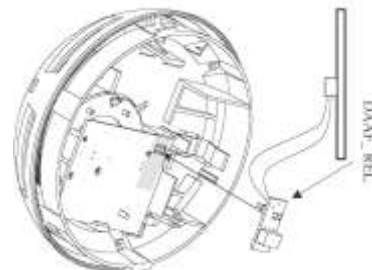
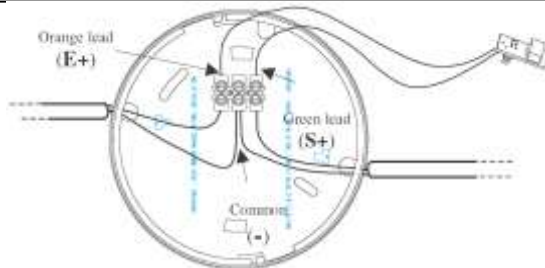
For optimal protection:

Place a detector in each room.

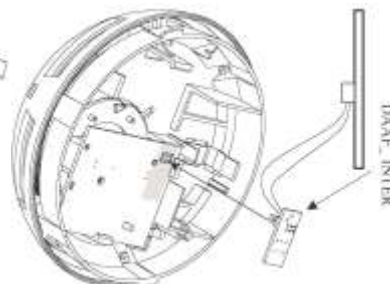
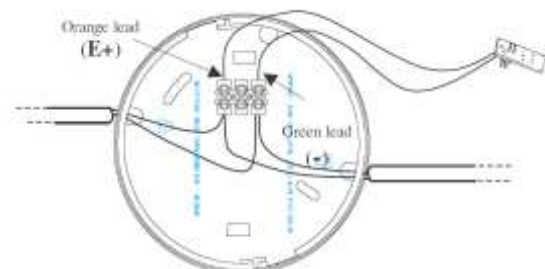
For basic protection:

- Place one detector on each floor.
- Place a detector near sleeping areas (for instance in the corridor leading to bedrooms; with corridors in excess of 10m long, place a detector at each end).
- Place a detector in each bedroom belonging to a smoker.

Base and detector connection for DAAF-REL Optional board



Base and detector connection for DAAF-INTER Optional board



Mobile homes:

For recent models of mobile homes, designed with good thermal insulation, install detectors on the ceiling. For poorly-insulated mobile homes, a thermal barrier may form in the ceiling. In this event it is preferable to install the detector on a wall.

REFERENCE

DESCRIPTION

VESTA

Domestic smoke alarm detector with battery

DAAF REL

Plug in card with NO contact for general alarm repetition

DAAF INTER

Plug in card for 2 wires interconnection between 2 or more VESTA

