

# MAPSKITALPHA-HEPHAIS

## Graphical maps supervision software

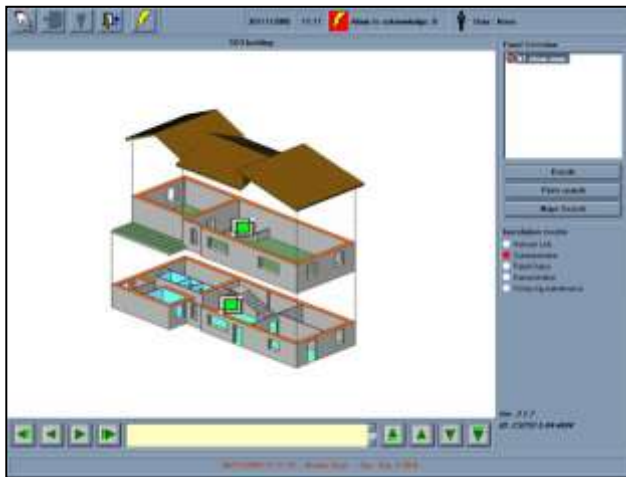
- **Supervision of fire detection systems**
- **Serial version**
- **Net version**
- **Compatible with Héphaïs 1600 panel**

**MAPSKITALPHA-HEPHAIS** is a software package planned to enable **remote management (via one or more PC-based surveillance station) of security installations (fire detection, alarm, gas detection, CCTV surveillance)**.

The panels installed indicate the status of controlled points and dialogue with PC-stations. **MAPSKITALPHA-HEPHAIS** translates in **graphic and acoustic shape** this information, and makes it real-time available to PC-station users. By means of the software, a PC station user can also execute, directly from PC, **commands on the security installation**.

The powerful configuration tools included guarantee high use flexibility:

- **MAPSKITALPHA-HEPHAIS** allows a complete management of the supervision staff
- **MAPSKITALPHA-HEPHAIS** allows setting up, in a complete way, the supervised installation's graphic representation on PC-stations.



### Main characteristics

- Version (TCP/IP)
- JBUS protocol communication between panels (variant of ModBus)
- Management of commands: inclusion/exclusion of points/zones, test zones ON/OFF, outputs/relays on/OFF, panel RESET.
- Max events memory: 30000
- Back-up events memory
- Security logging management
- Supervision staff management
- Easy visualization of various events
- Windows 95, 98, NT, ME, 2000, XP

**MAPSKITALPHA-HEPHAIS** software package comes realized in two different versions, planned for two different types of control system:

- **MAPSKITALPHA-HEPHAIS ("Serial")** – This version enables to shape and to manage a control system based on a single PC-station and one or more panels. Panels communicate to PC-station through one or more serial connection (8 panels maximum for each serial connection)
- **MAPSKITALPHA-HEPHAIS ("Network")** – This version enables to shape and to manage a more complex control system: one or more PC-station, and a widely selectable number of panels. Panels are connected to PC-stations via Ethernet network using proController devices. TCP/IP is used as communication protocol. As a favourable feature of the Ethernet network connection, in comparison with the serial connection, it's possible to locate panels and PC-stations at larger distances between them.

**MAPSKITALPHA-HEPHAIS** software package, both in serial and network version, has a modular structure.

The system is made up of 3 main program modules. A fourth, auxiliary, program module is distributed only with the network version **MAPSKITALPHA-HEPHAIS NET**:

- **MapsUser:** System supervision module – It performs the security installation management. It shows, on the PC-station monitor display, the security installation state, and enables the PC user to carry out commands on it.
- **MapsConf:** Control system configuration module – It enables to shape all parameters of the supervision module, so as to correctly adjust it to the security installation and to users
- **MapsGen:** Graphic maps configuration module – It enables to adjust the way the security installation is displayed to the PC station user. It allows splitting up the visualization of the security installation in smaller graphic units, called maps.
- **MapsCardProg:** ProController configuration module (**MAPSKITALPHA-HEPHAIS NET** only) – It enables to shape all ProController's parameters. A ProController is a device having the task to connect the security installation's panels to the communication network.



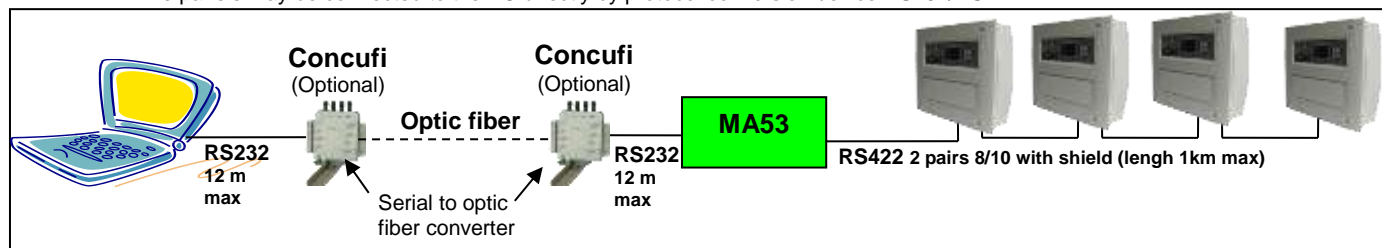
# MAPSKITALPHA-HEPHAIS

## Graphical maps supervision software

### MAPSKITALPHA-HEPHAIS: the serial version

The serial version of system manages a maximum of 8 different panels, connected to a single operating point (PC), between serial connections.

The panels may be connected to the PC directly by protocol conversion device RS232/RS422.

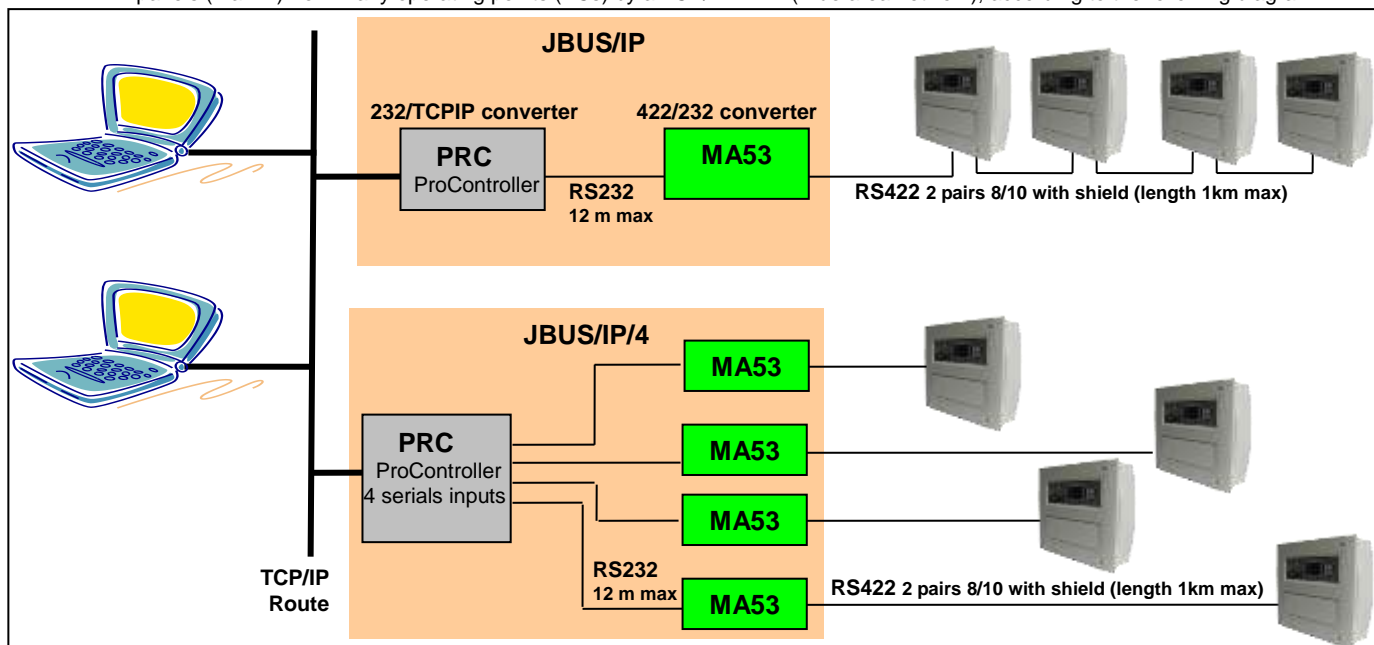


The serial solution, ideal for local supervision of installation distributed on low dimensions areas, is characterized of a single operating point (PC).

The limited resources of personal computers (number of serial ports) give the number of panels to supervise.

### MAPSKITALPHA-HEPHAIS NET: TCP/IP Net version

Net version system goes beyond all the limitations of the previous solution. It gives the possibility to manage many different panels (max. 4) from many operating points (PCs) by a TCP/IP WAN (wide area network), according to the following diagram:



The PRC is charged of two different tasks:

- Keep in memory and transfer, as per request, on TCP/IP network, the information necessary to different operating points PCs.
- Manage the interactions with other PRCs for transversal command execution between the different subsystems.

This distributed intelligence structure, permit to have operating points (PCs) completely independents and to introduce the "degradating operation" of entire system. In facts, when all the PCs are inactive, for any reason, the system would continue to work with a limited set of operations (transversal command, events memorisations, etc.).

The use of PRC gives the possibility to manage, completely and in real time, from every operating point (PC), the installation.

#### REFERENCE

MAPSKITALPHA-HEPHAIS  
MAPSPLUSALPHA-HEPHAIS  
MAPSKITALPHA-HEPHAIS  
NET  
MAPSPLUSALPHA-HEPHAIS  
NET

#### ACCESSORIES

MA53  
Jbus/IP

Jbus/ip/4

CONCUFI

#### DESCRIPTION

Serial version base remote map monitoring software for 8 panels (to be completed with MAPSPLUSALPHA)

Serial version additional licence for management of 1 panel

Net version base remote map monitoring software (to be completed with MAPSPLUSALPHANET)

Net version additional licence for management of 1 panels

RS232/422 converter with power supply

Tcpip interface for analogue panel

(MA53 422/232 converter + ProController 232/TCPIP converter)

Tcpip interface for 4 analogue panel

(4 x MA53 422/232 converter + ProController 232/TCPIP converter)

Converter module RS422/RS485/RS232 to optic fiber