



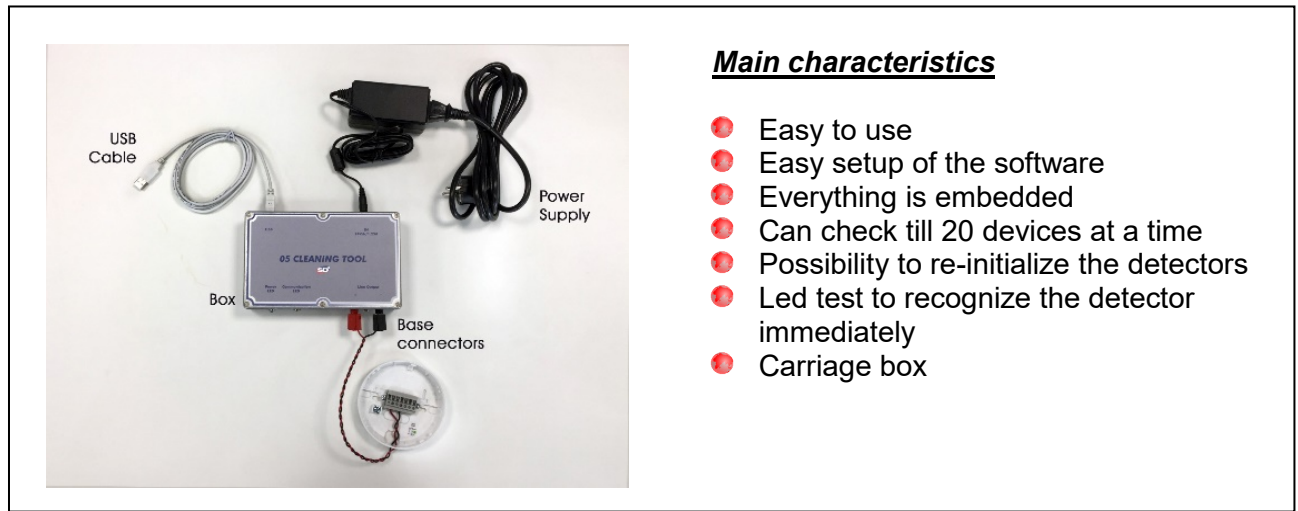
CLEANING TOOL

Kit for maintenance of optical detectors

CLEANING TOOL is a device allowing the maintenance of your optical sensor park.

The main function of this device is to check the status of the detectors before starting the cleaning procedure, after this it is possible to decide if the detector must be cleaned or not, and finally, after the cleaning, it is possible to check the result of the work done and, if it is ok, set immediately the new dirty status level value inside the detector, so the panel can recognize it immediately without waiting the 36 hours requested for the normal procedure.

The tool is supplied with everything necessary for the purpose of the job.



Main characteristics

- Easy to use
- Easy setup of the software
- Everything is embedded
- Can check till 20 devices at a time
- Possibility to re-initialize the detectors
- Led test to recognize the detector immediately
- Carriage box



Computer requirements

Processor	Intel i3
RAM memory	1 Gb
Required disk space	50 Gb SATA minimum
Monitor	12 inch minimum
OS	Microsoft XP, Vista, Seven, 8, 10 (32bits/64bits)
Drives	CD ROM
Graphic card	Embedded
Peripherals	
USB Port	

REFERENCE

Cleaning Tool

DESCRIPTION

Tool kit dedicated to the maintenance of optical sensors

