



# 1450 & 2450

## Liquid, flooding and moisture detectors

### 1450: Flooding and moisture detector



The 1450 has a sensor detecting water through 4 gold-plated supporting feet. It is normally used for the protection against the flooding of computing centres, boiler rooms, offices, laboratories, etc. It cannot be used with inflammable liquids.

The device is available with 12 or 24V DC power supply, is equipped with changeover relay output to control telephone combiners, alarm sirens, etc. In addition, it can be connected to several external feelers 1450 S (up to 10). For higher protection, it is also equipped with a moisture detector, whose sensitivity can be regulated with internal trimmer.

<b>Power voltage: 12/24V DC</b>	<b>Color: white</b>
<b>Max. consumption: 30 mA</b>	<b>Weight: 0,16 Kg</b>
<b>Output: changeover relay, max. 1A, 30V DC</b>	<b>Operating temperature: +5°C to + 50°C</b>
<b>Packaging: 2 pcs/pack.</b>	<b>Ip rating: IP 40</b>

### 2450: IP 65 liquid detector



The 2450 has a sensor detecting water on the floor through 2 gold-plated supporting feet. It is normally used for the protection against the flooding of computing centres, boiler rooms, offices, laboratories, etc. The sensor, contained in an aluminium case with epoxy white painting, is equipped with a steel support that allows to detect liquids at heights ranging from 0 to 11 mm according to the specific need. In case of alarm, the relay changes status and the integrated signalling LED lights up. Remote testing and inhibition functions. The sensor circuit is oscillating to prevent electrolysis and corrosion problems.

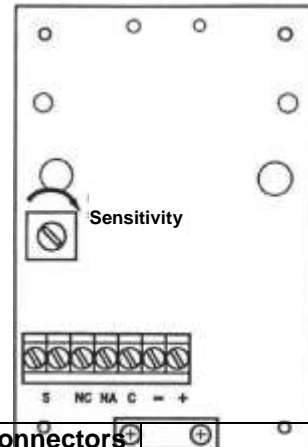
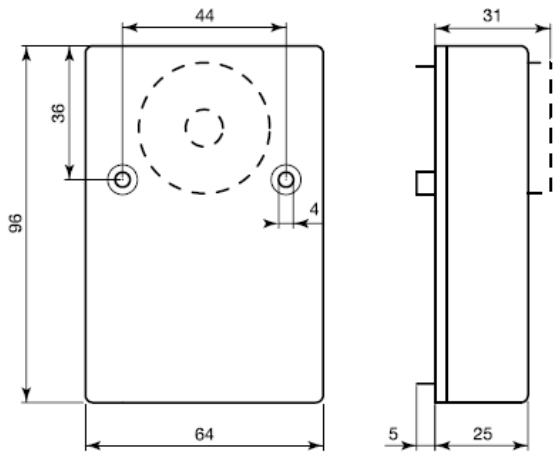
<b>Power voltage: 12/24V DC</b>	<b>Color: white</b>
<b>Consumption at rest: 16mA @ 12V DC, 21mA @ 24V DC</b>	<b>Operating temperature: -15°C to +70°C</b>
<b>Consumption in alarm: 38mA @ 12V DC, 49mA @ 24V DC</b>	
<b>Output: Changeover relay, max. 1A, 30V DC</b>	<b>Ip rating: IP67</b>
<b>N° of wires: 7</b>	<b>Package weight: 0,89 Kg</b>
<b>Cable length: 4m</b>	<b>Packaging: 1 pcs/pack.</b>



# 1450 & 2450

## Liquid, flooding and moisture detectors

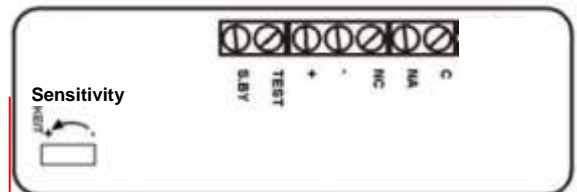
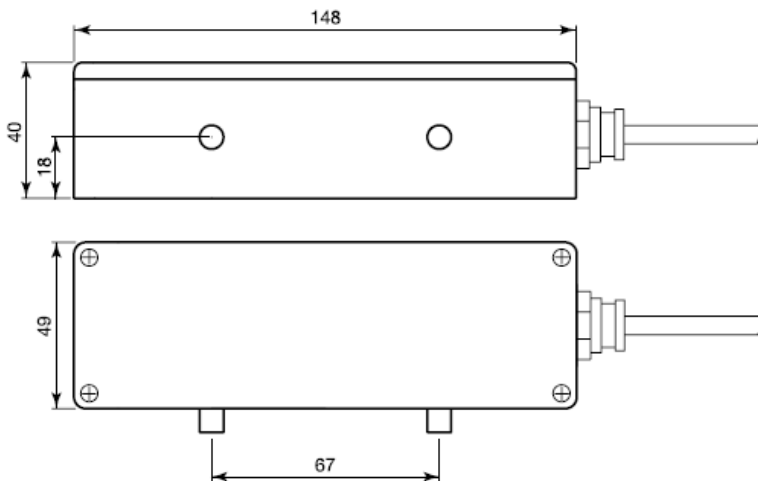
### 1450: Connectors and characteristics



#### 1450 connectors

NC	Common relay
NA	Normally open relay
C	COM relay
-	Power supply negative
+	Power supply positive
S	Probe

### 2450: Connectors and characteristics



#### 2450 connectors

Grey - C	Common relay
Orange - NA	N.O relay
Green - NC	N.C relay
White - (-)	Power supply negative
Red - (+)	Power supply positive
Black - TEST	Test
Blue - S.BY	Stand-by
Yellow	Not used

#### REFERENCE

1450  
2450

#### DESCRIPTION

Flooding and moisture detector with free voltage contact relay, 12/24V  
IP 67 liquid detector with free voltage contact relay, 12/24V

