



VESTA

Domestic smoke alarm detector

- *AFNOR certification*
- *Certification CE EN14604 according to CPD*
- *Designed for private homes monitoring*

VESTA helps protect you and your home 24 hours a day. It has been specially designed for monitoring private homes (houses, flats, mobile homes, caravans and camper vans).

Whenever smoke is detected, an audio alarm is triggered.

VESTA is an optical smoke detector that operates using the Tyndall effect. It analyses the atmosphere by reflecting light of smoke particles.

In particular it detects cold, visible smoke (with large particles ranging from 0,3µm to 2µm).

It runs with a battery and emits a modulated sound (compatible with the evacuation signal specified in the ISO8201 standard) when it detects smoke.

DAAF-REL is an optional board available that makes available one relay to repeat the information of alarm and to interface other fire detection equipments (certified EN14604).

DAAF-INTER is an optional board available allowing to connect one or more VESTA in a 2 wire network



Main characteristics

- Smoke detection
- Photoelectric scattering (Tyndall effect)
- Standard modulated sound
- Standby flashing led
- Optional board1 relay for alarm repetition
- Optional 2 wires network board

Power supply specification	
Main supply voltage	6,5Vdc to 9Vdc
Nominal main supply voltage	9Vdc
Quiescent current (9Vdc)	4µA to 5,5µA + 6,5µA average (500mA/105µs each 8s)
Alarm current (9Vdc)	11mA ± 2mA
Fault current (9Vdc)	Same as quiescent current
Mechanical characteristics	
Unit weight	185g
Unit dimensions (in mm)	H:54 D:120
Unit row material	ABS
Unit colour	Off white
Protection class	IP32
Mounting	2 screws Ø 3,5mm
Climatic characteristics	
Operating temperature	0°C to +55°C
Storage temperature	+10°C to +50°C
Operating relative humidity	≤ 93%
Storage relative humidity	≤ 85%
Acoustic characteristics	
Sound power in alarm	> 93dB @ 1m
Sound power in fault	> 70dB @ 1m



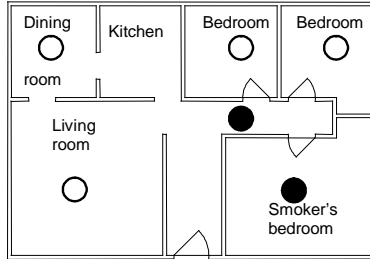
VESTA

Domestic smoke alarm detector

MOUNTING

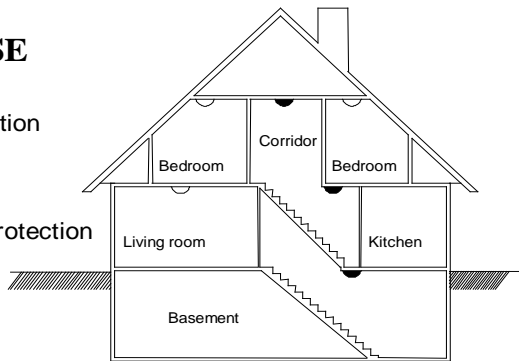
FLAT

- Basic protection
- Enhanced protection



HOUSE

- Basic protection
- Enhanced protection



Do not install the detector:

- Less than 1m away from heating, cooling or ventilation ducts. Any smoke may be drawn away or diluted.
- In a spot where the temperature may fall below 0°C or rise above +50°C, as there would be a risk of the detector operating poorly as a result.
- In a location where there is a risk of condensation forming. Bathrooms and laundry rooms should be avoided.
- In places such as poorly-ventilated kitchens or garages, where smoke may be released and cause false alarms.
- In spots that are too dusty.

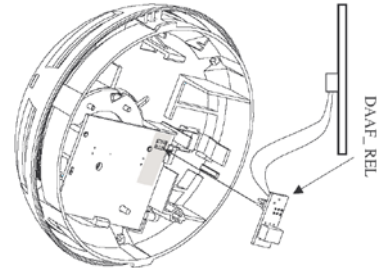
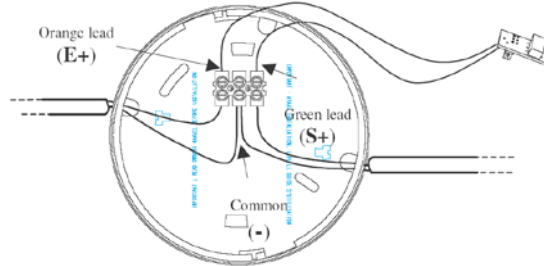
For optimal protection:

Place a detector in each room.

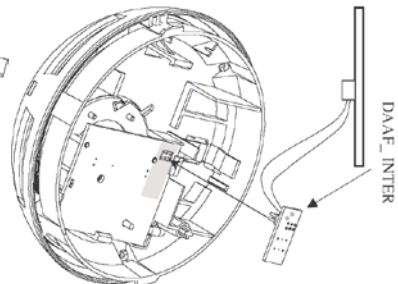
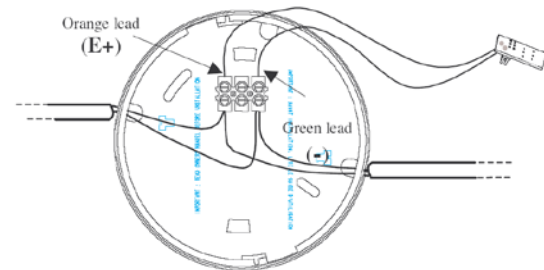
For basic protection:

- Place one detector on each floor.
- Place a detector near sleeping areas (for instance in the corridor leading to bedrooms; with corridors in excess of 10m long, place a detector at each end).
- Place a detector in each bedroom belonging to a smoker.

Base and detector connection for DAAF-REL Optional board



Base and detector connection for DAAF-INTER Optional board



Mobile homes:

For recent models of mobile homes, designed with good thermal insulation, install detectors on the ceiling. For poorly-insulated mobile homes, a thermal barrier may form in the ceiling. In this event it is preferable to install the detector on a wall.

REFERENCE DESCRIPTION

VESTA	Domestic smoke alarm detector with battery
DAAF REL	Plug in card with NO contact for general alarm repetition
DAAF INTER	Plug in card for 2 wires interconnection between 2 or more VESTA

