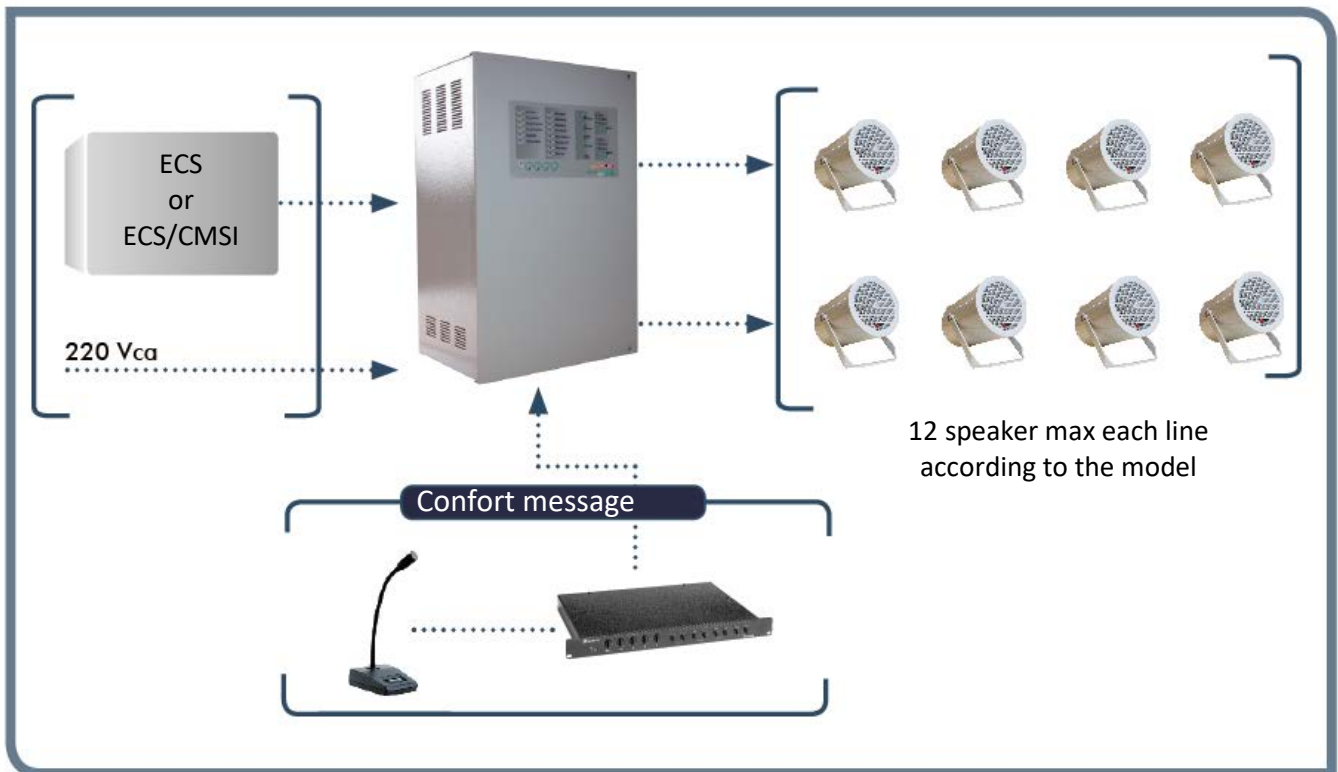




# SEV 4

## Voice evacuation panel



### Operating principle

The SEV4 is a Control and Voice Alarm Signaling equipment (ECS-AV) connected to the Fire Safety System (SSI).

⇒ The system consists of an ECS-AV panel with its integrated power supply and 2 lines of speakers.

⇒ It is a voice evacuation system multi-language, multi-message and multi-sounds. In evacuation phase, it alternates the diffusion of the sound signal NF S 32-001 with a suitable voice message that guides, with increased efficiency, the flow of people to secure areas.

⇒ The SEV4 can also be used for alarm or containment layout through 6 sounds and 6 customizable messages are available. A "paging" feature allows any time to switch customized audio announcements.

### Regulatory environment

The SEV4 conforms to standards:



In addition, NF-SSI brand guarantees the functional coherence of the ISS channel



Mark NF

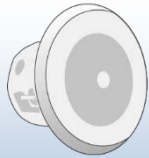


# SEV 4

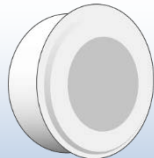
## Voice evacuation panel

The choice of speaker is predominant to ensure optimal audibility of evacuation message. This choice is based on the space to sound with: ambient sound, height, nature of local materials (carpet, marble ...), environmental constraints (wet, dusty...).

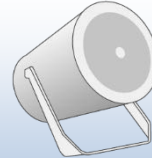
### Principle of speaker location



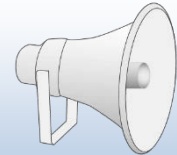
HP CEILING



HP APPLIQUE



HP PROJECTEUR



HP PAVILLON

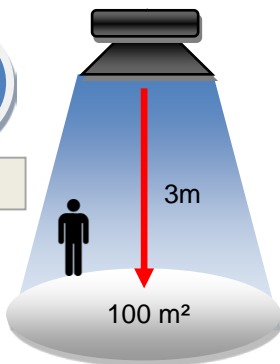
It is possible to mix the different models of speakers on the same line by respecting the max 20W available in 100V line.



### CEILING SPEAKER



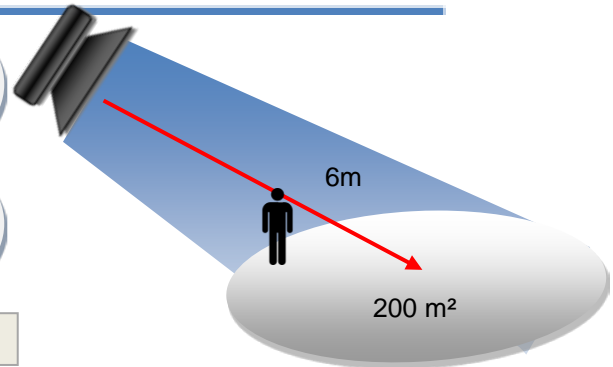
55 dB



### CEILING SPEAKER



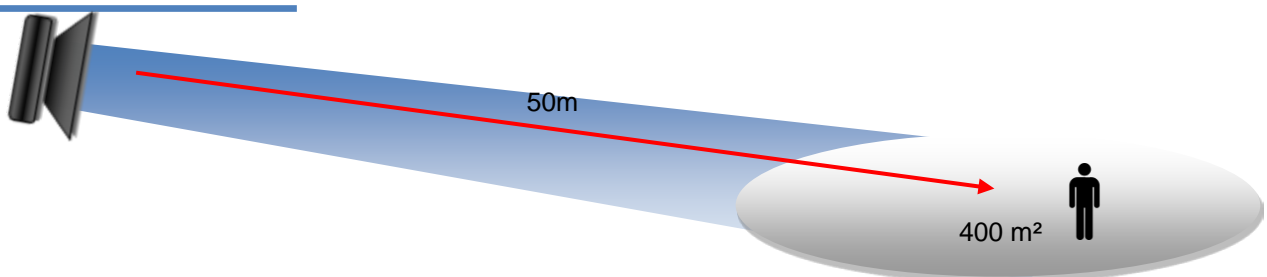
65 dB



### SPEAKER PAVILLON



75 dB



### APPLICATIONS

HP ceiling: Offices, meeting rooms  
HP applique: Sales area, parking  
HP projecteur: Garden, outdoor parking  
HP pavillon: industry, outdoor courtyard

