



# DAACO10

## Stand alone CO gas detector

- Certification CE, EN50291

**DAACO10** is a stand-alone Carbon monoxide (CO) gas detector.

Innovative, it is equipped with an **electrochemical sensor** that permanently analyses the CO concentration in the air and has effective filter against false alarms.

The Carbon Monoxide gas is a very **dangerous** and **sneaky gas, odorless, non-irritating** and considered as a **chemical poisonous** it can be deadly **lethal** even in low concentration.

With its provided battery, its embedded sounder and effective sensor, **DAACO10** contributes to the protection of your life 24H/7. It is specially elaborated for the protection of the private accommodations.

Its design and size makes its installation very versatile for all rooms of the house.



### Main characteristics

- Discrete and elegant
- Mobile installation and detection
- Provided with battery
- Embedded buzzer
- Electrochemical sensor
- Best false alarm accuracy
- 5 years work life guaranteed
- **CE Certified, EN50291**

<b>Electrical specification</b>	
Operating voltage	From 1 battery 9V provided
Autonomy	5 years
Life length	5 years
<b>Operating specifications</b>	
Precision	Can vary with temperature and relative humidity of the room. 1ppm to 15 ppm
Tolerance	+/- 15%
Ppm range of measure	0 – 600 ppm
Acoustic power	Discontinuous sound >85 dB
<b>Climatic characteristics</b>	
Operating temperature	-10°C < T° < +40°C
Operating relative humidity	15% < RH < 90%
<b>Mechanical characteristics</b>	
Dimensions	138 x 90 x 40 mm (W x D x H)
Weight	200 g



# DAACO10

## Stand alone CO gas detector

### Most common sources of domestic CO gas rejection.



Defective or badly installed  
gas heater devices



Electric Generators  
Auxiliary heating



Exhaust  
Motor gas



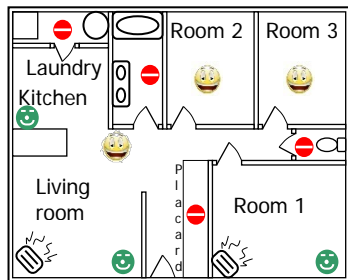
Combustion in a  
closed area or  
badly ventilated



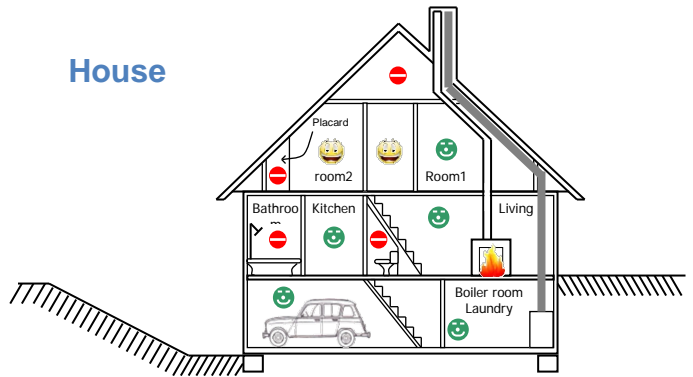
### Where to install the Stand-alone Carbon monoxide gas detector

#### Appartement

- Base protection
- Improved protection
- Do not install
- Combustion heating

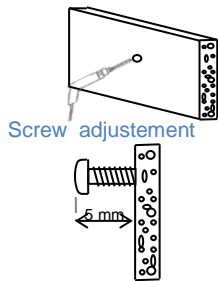


#### House

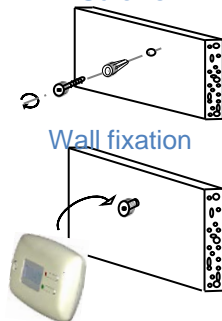


### How to install the Stand-alone Carbon monoxide gas detector

Drilling Ø6

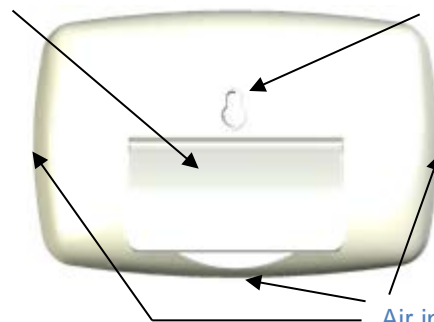


Screws



Horizontal position support

Wall fixing hole



Air intakes

#### REFERENCE

DAACO 010

#### DESCRIPTION

Stand-alone Carbon monoxide gas detector (CO)

